



2025/2026

# COLLEGE PROFILE



Global institution of excellence, surpassing community needs



# INDEX

## CONTENTS

	PAGE
Vision, Mission and Key Value Statement	1
The logo and its symbolic value	2
Overview of the TVET College Sector	3
ORBIT TVET College Sites	3 - 5
Programmes offered	6 - 9
Artificial Intelligence (AI) Programme	10
Centres of Specialisation (CoS)	10-11
Student Support Services	12
Governance and Management	13
Partnerships	13

## 1 VISION, MISSION AND KEY VALUE STATEMENTS

### VISION

A global institution of excellence, surpassing community needs

### MISSION

To provide high quality Education and Training that is affordable, relevant, learner-centred and that contributes to the total development of individuals through:

- Optimal utilisation of resources
- Creative and innovative modes of delivery
- Appropriately skilled staff and
- Community upliftment

### KEY VALUES

**ORBIT College believes in:**

#### **Transformation**

Policies, procedures, activities and programmes are responsive to community needs and redress imbalances of the past thereby ensuring increased inclusivity and accessibility

#### **Accountability**

Decision-making processes are transparent with proper financial management systems and procedures with the focus on efficiency and effectiveness, including being fair, ethical and trustworthy in all that we do

#### **Respect**

We respect the values of human dignity, equality, human rights and freedom, non-racism and non-sexism

#### **Teamwork**

Co-operating with one another and with the community, business stakeholders and partners in education in an open and supportive way to achieve shared goals

## 2

### THE LOGO AND ITS SYMBOLIC VALUE

#### 2.1 The official ORBIT TVET College logo



The logo was designed to reflect the identity of the institution. It has the power to represent the institution as a stand-alone symbol.

#### 2.2 Symbolic Value

The logo represents an orbiting globe which is associated with constant movement and a dynamic character. ORBIT TVET College represents an institution that is dynamic and that always moves forward by aiming to redress the imbalances of the past through creative and innovative modes of delivery that, in turn, contribute to the improvement of the South African educational landscape. ORBIT TVET College is part of the TVET College Sector and projects itself as an institution in sync with global development trends, constantly aspiring to keep abreast of new and innovative education and training trends in order to produce top quality students who can effectively maintain themselves in any working environment, whether national or international.

The four coloured blocks within the globe are representative of the four sites that comprise the College, i.e. Brits Campus, Mankwe Campus, Rustenburg Campus and Central Office. The blocks touch one another symbolising uniformity, but each still retains its unique character, as symbolised by the different colours of the blocks.

#### 2.4 Corporate Colours

The four corporate colours were originally derived from the main colours of the different learning delivery sites when ORBIT College was established due to the merging process:



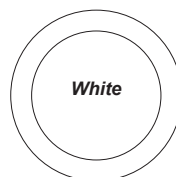
Pantone  
Reflex Blue



Pantone  
Process  
Yellow



Pantone  
NR 208



White

## 3

### OVERVIEW OF COLLEGE TVET SECTOR

Public TVET Colleges form part of the Department of Higher Education & Training (DHET) together with public Universities, National Institutes for Higher Education, Trade Testing Centres, Skills Development Institutes and Sector Education and Training Authorities (SETAs).

of South Africa. This relates to equipping the unemployed, (specifically youth who is Not in Education, not in Employment and Training) i.e. NEETs with the requisite skills base to overcome poverty and the economic challenge of unemployment.

ORBIT College is one of three public TVET Colleges in the North West Province. The mandate of the public TVET Colleges is to steadily increase the number of students enrolled and trained in priority and critical skills areas, putting TVET Colleges at the centre of skills development and more specifically, the artisan development agenda

The specific focus of public TVET Colleges is to address the skills shortages in SA, by offering relevant and responsive vocational and occupational programmes.

Vocational Programmes are quality assured by Umalusi and Occupational Programmes are quality assured by the Quality Council for Trades and Occupations (QCTO).

## 4

### ORBIT TVET COLLEGE SITES

The College has a Central Office in Rustenburg with three learning delivery sites

- Rustenburg Campus
- Brits Campus
- Mankwe Campus

A broad spectrum of programmes is offered at the three campuses to suit the different needs within the diverse communities.



## CENTRAL OFFICE

The Central Office is situated in Rustenburg, hosting Senior Management, Academic and Student Support Services, Finance, Supply Chain Corporate Services Units, as well as Innovation & Development. The Central Office is the administration and management hub of ORBIT TVET College from where support to all delivery sites from the different units is initiated and implemented. ORBIT TVET College is proud host of Artificial Intelligence (AI) Programme which is a collaborative between INTEL, Department of Higher Education & Training. ORBIT College is the first institution in Africa to roll out the INTEL Artificial Intelligence (AI) Future Workforce Programme that was launched at Brits Campus on 19 July 2022. The purpose of the programme is to empower future workforce with the necessary AI skills for employability in a digital economy.



## MANKWE CAMPUS

Situated just a few kilometres from Sun International's Sun City, Mankwe Campus hosts a wide range of student facilities including student accommodation and sporting grounds. A magnificent simulated workplace environment for Tourism and Hospitality students is a unique feature of the Mankwe Campus. The Campus boasts two unique simulated guesthouse facilities, which are serviced and managed by the Hospitality and Tourism students. The public can book these self-catering facilities at very affordable prices and enjoy a relaxing stay in a tranquil environment. The Tourism and Hospitality Training Centre consisting of conference facilities, and the restaurant expose students to real-life work experience while completing their studies.

Mankwe Campus also offers Automotive Repair and Maintenance, as well as Transport and Logistics as niche programmes and boasts a state-of-the-art Samsung Engineering and Electronics Academy. In addition, a number of relevant artisan development programmes are offered with the campus being awarded a Centre of Specialisation in Diesel Trade. Mankwe Campus is also an accredited Trade Test Centre for the Diesel Mechanic Trade. Mankwe Campus also hosts the CFE Rapid Incubator where students are assisted to set up their own businesses. Furthermore, Mankwe Campus is a proud host of the CHIETA Virtual Welding Workshop.



4

## RUSTENBURG CAMPUS

The Rustenburg Campus is situated in an urban area surrounded by large mining operations. Unique aspects of the Rustenburg Campus include the Jewellery Design and Manufacture Training Centre next to *The Platinum Incubator* (TPI) where students are assisted in getting their own jewellery design and trade businesses off the ground. Rustenburg Campus is also the ICT training hub of ORBIT College, offering programmes in ICT, Multimedia, Robotics & AI. Hairdressing, Beauty & Nail Technology are also offered.

Furthermore, Rustenburg Campus is the proud host of the Centre for Entrepreneurship. The purpose of this Centre is to provide Generic Enterprise Development, Intervention and Incubation services to ORBIT TVET College graduates and members from the community. In addition to the above, Rustenburg Campus serves the local mining industry by offering a variety of relevant artisan development programmes.



## BRITS CAMPUS

Brits Campus is situated in a semi-urban area, surrounded by the mining sector, businesses and industries and is the only institution in the Madibeng area offering Engineering-related studies in Civil Engineering and Building Construction and Electrical Engineering. Brits Campus was awarded a Centre of Specialisation in Electrical Trade. Brits Campus is also a proud host of the CHIETA SMART Centre.



5

VOCATIONAL		OCCUPATIONAL	
National Certificate (Vocational)	REPORT 191 (NATED)	Skills Programmes	Learnerships
<p>The National Certificate (Vocational) Level 2-4 programmes are quality assured by UMALUSI</p> <p>NCV programmes (L2-L4) are offered in Engineering, Business, ICT &amp; Service-related fields, providing theoretical &amp; practical training</p>	<p><b>N4-N6 Programmes (Alternative Post-matric programmes)</b> in Engineering, Business, Utility and Educational Studies. Students must comply with the required number of working hours in the relevant field of study to obtain a National N Diploma:</p> <ul style="list-style-type: none"> <li>• 1½ years for Business and General Studies (Semester) Programmes (2000 working hours)</li> <li>• 2 years for Engineering Studies (Trimester) Programmes (2670 working hours)</li> </ul> <p>QCTO is the Quality Assurance Board for N4 – N6 Report 191 programmes</p>	<p><b>Occupational Programmes</b> are offered as QCTO/SETA Accredited programmes</p> <p>Occupational programmes re offered in the form of skills programmes, learnerships or full qualifications. Thhe offering of these programmes are dependent on th number of students and availbel funding</p> <p><b>Learnerships</b> combine theory at the College or Training Centre with relevant on-the-job practical training.</p> <p>Learnerships are based on legally binding agreements between employers, students and training provider</p> <p><b>Skills Programmes</b> are unit standards extracted from formal full qualifications. The College is granted approval from the relevant SETA to offer the programme.</p> <p>Offering of programmes is demand-driven</p>	

NATIONAL CERTIFICATE (VOCATIONAL) PROGRAMMES NQF LEVEL 2-4	
Entry Requirements for NQF Level 2	<ul style="list-style-type: none"> <li>• Grade 9 – 12 year-end school report OR</li> <li>• An NQF Level 1 qualification</li> <li>• All Engineering Programme students must have Mathematics, not Mathematical Literacy</li> </ul>
Entry Requirements for NQF Level 3 Entry Requirements for NQF Level 4	<p>A relevant NC(V) NQF Level 2 qualification A relevant NC(V) NQF Level 3 qualification</p>
NC(V) Programmes offered	<ul style="list-style-type: none"> <li>• Engineering &amp; Related Design (Boilermaking, Fitting and Turning or Auto Repair and Maintenance)</li> <li>• Electrical Infrastructure Construction</li> <li>• Civil Engineering &amp; Building Construction</li> <li>• Information &amp; Communication Technology (ICT, multi-media)</li> <li>• Information &amp; Communication Technology ( Coding &amp; Robotics)</li> <li>• Tourism</li> <li>• Hospitality &amp; Catering Services</li> <li>• Transport &amp; Logistics</li> <li>• Finance, Economics &amp; Accounting</li> <li>• Office Administration</li> </ul> <p>• Pre-Vocational Learning Programmes (PLP)</p> <p>PLP is a one-year bridging programme designed to accommodate students who did not manage to comply fully for admission to the NCV programmes. Only a limited number of students are enrolled for PLP.</p>
Career Pathing	<ul style="list-style-type: none"> <li>• Access to Higher Education in accordance with HE Institutional Admission Requirements and the Policy on the minimum admission requirements for Higher Certificate, Diploma and Degree programmes requiring a National Certificate (Vocational) at Level 4</li> <li>• Join the workplace in the relevant field of study</li> <li>• NC(V) is recognised for apprenticeships/ learnerships in accordance with <b>NAMB/ SETA</b> requirements</li> <li>• Become an entrepreneur</li> </ul>

## 5.2 Vocational Programmes (continued)

REPORT 191 PROGRAMMES N4 – N6 ALTERNATIVE POST-MATRIC PROGRAMMES	
<b>Entry Requirements</b>	<ul style="list-style-type: none"> <li>Grade 12 (National Senior Certificate) year-end report</li> <li>Enrolment in Engineering Programmes will depend on whether the student has done the relevant subjects in Grade 12</li> <li>New students must enrol for all 4 subjects</li> <li>Enrolment spaces are subject to approved number by DHET</li> </ul>
<b>N4 – N6 Alternative Post-Matric Programmes offered</b>	<ul style="list-style-type: none"> <li>Engineering (Mechanical)</li> <li>Engineering (Electrical)</li> <li>Human Resource Management (<i>Online only</i>)</li> <li>Management Assistant</li> <li>Financial Management</li> <li>Business Management</li> <li>Public Management</li> <li>Medical Secretary</li> <li>Legal Secretary</li> <li>Tourism</li> <li>Hospitality and Catering Services</li> <li>Art and Design</li> </ul>
<b>Career Pathing</b>	<p>Students must obtain (2000 hours work experience /18 months for semester programmes and 2670 hours work experience/24 months for trimester programmes) before a National N Diploma will be issued</p> <p>This qualification is not equivalent to the National Diploma obtained at a Higher Education Institution, due to it falling within the TVET College Band</p>

## 5.3 Occupational Learning Programmes

ACCREDITED OCCUPATIONAL QUALIFICATIONS	
Hairdressing NQF Level 2-4	Electrician Level 4
Beauty or Nail Technology NQF Level 4	Shielded Metal Arc Welder NQF Level 2
Spray Painting NQF Level 2-4	Coded Welding NQF Level 4
Automotive Repairs & Maintenance NQF Level 2-4	Computer and Digital Support Assistant NQF Level 4
Community Development NQF Level 4	General Garden Maintenance Worker NQF Level 1
Early Childhood Development NQF Level 4-5	General Residential Repairer NQF Level 2 (QCTO)
Air-conditioning & Refrigeration NQF Level 2	Basic Kitchen Appliance Repairer NQF Level 2
Workplace Preparation NQF Level 2	Learning Support Facilitator NQF Level 5
Work Based Learning & Development Practitioner NQF Level 5	Workplace Essential Skills NQF Level 4
Workshop Tool Assistant NQF Level 2	Chemical Hair Reformation Attendant NQF Level 4
Assistant Handy Person NQF Level 3	Hair & Scalp Treatment Attendant NQF Level 2
Moral Regeneration Education and awareness Facilitator NQF Level 5	Haircutting Attendant NQF Level 4
Perform Eyelash tint & Eyebrow tinting & Shaping NQF Level 3	New Venture NQF Level 2
Perform a specialised Manicure & Pedicure using various techniques NQF Level 4	Conflict Management NQF Level 5
Project Management NQF Level 5	Artificial Intelligence Software Developer NQF Level 4
Diesel Mechanic NQF Level 4	Chef NQF Level 5
Freight Handler NQF Level 3	Cleaning and Forwarding Agent NQF Level 5

**NB!** Some of these programmes are only offered on a project-basis which involves MoUs having been signed with businesses, government departments or other institutions. This implies that although the College has the Programme Approval to offer the programmes, these are not currently offered to the public.

Any other recognised skills programme for which the College is registered may also be offered, should the demand exist.

## ARTIFICIAL INTELLIGENCE (AI) PROGRAMME

**A**rtificial Intelligence is a collaborative between INTEL, the Department of Higher Education & Training (DHET) and the College. ORBIT College is the first institution in Africa to roll out the INTEL Artificial Intelligence (AI) Future Workforce Programme that was launched at Brits Campus on 19 July 2022. The purpose of the programme is to empower future workforce with the necessary AI skills for employability in a digital economy.

Participants gain practical skills in the following:

STAGE	OUTCOMES	NO. OF MODULES & DURATION
1. AWARENESS	General awareness of AI	6 Module: 6 hours
2. FOUNDATION	AI & programming fundamentals	9 Modules: 50 - 57 hours
3. EXPERIENCE	AI domains & technologies	20 Modules: 41 - 129 hours
4. CAPSTONE	Build AI solutions with knowledge	3 Modules: 24 hours
<b>Admission requirements</b>	<ul style="list-style-type: none"> <li>Must be over 16 years of age</li> <li>Foundational mathematics and statistical skills</li> <li>Applicants who have studied physical or natural sciences have an added advantage</li> <li><b>No coding experience is required</b></li> </ul>	

## ORBIT COLLEGE CENTRES OF SPECIALISATION (CoS)

Occupational programmes in South Africa are expected to continue to develop to meet the needs of the workplace. The Quality Council for Trades and Occupations (QCTO) manages the Occupational Qualifications Sub-Framework (OQSF) to ensure that qualifications are aligned with industry needs.

### What are occupational learning programmes?

Occupational learning programmes include apprenticeships, learnerships, and skills programmes. These programmes prepare students for specific skills in a specific working environment.

### Recognition of skills

The OQSF policy allows for the recognition of skills programmes, which are similar to short courses or micro-credentials.

### Recognition of prior learning

The NQF promotes the recognition of prior learning (RPL), which allows people to have their skills and knowledge assessed and recognised as part of a qualification.

### How will occupational programmes develop?

#### New qualifications

The OQSF will provide for Occupational Certificates and Diplomas at different levels of the National Qualifications Framework (NQF) that includes artisan development programmes.

### Centres of Specialisation (CoS) in the TVET College sector

CoS is a programme which aims to inform college differentiation, promotes quality teaching and learning, facilitates responsiveness and provides a model for the implementation of QCTO's trade qualifications at the same time as it develops artisanal skills in demand for economic growth, starting with the Strategic Integrated Projects (SIPs).

The Centres of Specialisation are departments within the public TVET College Campuses dedicated to artisan development training in partnership with employers. These centres strive to produce successful quality artisans in one or more of the priority trades.

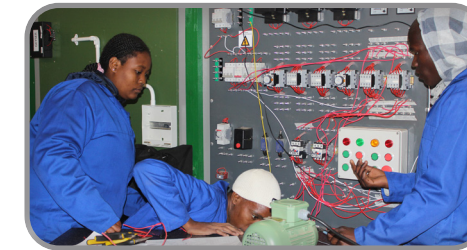
CoS programmes ensure a closer working relationship with industry, training centres and the Post School and Training (PSET) Sector.

The curriculum offered consists of occupational qualifications designed by industry, for industry and registered with the Quality Council for Trades and Occupations (QCTO).

ORBIT TVET College boasts four Centres of Specialisation:

### BRITS CAMPUS - ELECTRICAL TRADE

ORBIT College, in collaboration with leading mining companies and key industry stakeholders, is dedicated to developing highly skilled and competent Electrical and Diesel Mechanic trade professionals who meet and exceed global industry standards. Through a combination of rigorous academic training, hands-on practical experience, and exposure to cutting-edge technologies, the college ensures that graduates are fully equipped to excel in the modern Electrical and Diesel Mechanic trade sector.



### MANKWE CAMPUS - DIESEL MECHANIC TRADE



### RUSTENBURG CAMPUS - HAIRDRESSING

ORBIT College, in partnership with Services SETA as the relevant SETA is dedicated to developing highly skilled and professional hairdressers who meet the highest industry standards.



### MANKWE CAMPUS - CHEF TRADE

ORBIT College, in partnership with FoodBev SETA as the relevant SETA, is committed to producing highly skilled and innovative chefs who meet world-class culinary standards.



## 8 STUDENT SUPPORT SERVICES

### 8.1 Financial Assistance

#### NATIONAL STUDENT FINANCIAL AID SCHEME (NSFAS)

Bursaries will be awarded according to the 2025 NSFAS Eligibility Criteria and Conditions for Financial Aid.

#### Eligibility criteria & conditions

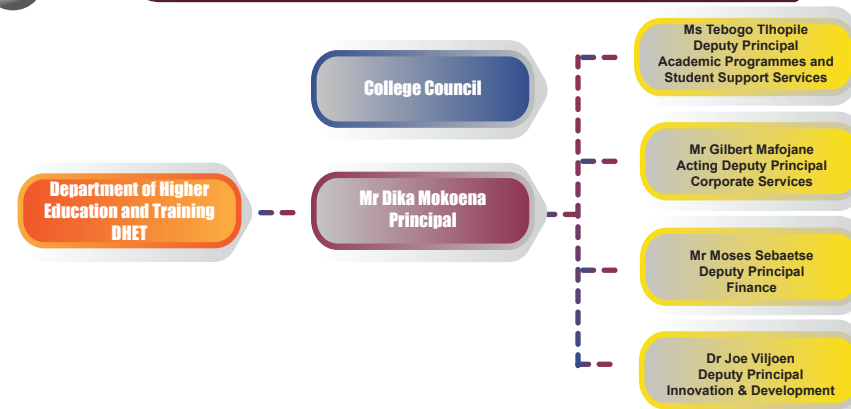
- Only South African Citizens qualify for this bursary scheme
- Applicants must be registered or intending to register on the NC(V), PLP or Report 191 programme at any of the public TVET Colleges in South Africa
- Applicants must demonstrate potential for academic success or proven academic success (academically deserving) and financial need
- Must not be enrolling for a qualification equivalent to previous learning that was state-funded
- **Applicants will qualify for funding if they fall within the maximum threshold of up to R350 000,00 of combined gross family income per annum**
- Persons with a disability with a combined household income of not more than R600 000,00 per annum qualify

### 8.2 Academic and Social Student Support Services

ACADEMIC SUPPORT AND CAREER DEVELOPMENT	SOCIAL SUPPORT
<ul style="list-style-type: none"> <li>• Career Advisory Services</li> <li>• Placement Assessments</li> <li>• Peer Academic Leadership Development</li> <li>• Academic Support</li> <li>• Experiential Training &amp; Internships &amp; Job Placement</li> <li>• Entrepreneurship Support</li> <li>• Learner with Special Needs in Education (LSNE) Support</li> <li>• Information on Higher Education Study Opportunities</li> <li>• Graduate Tracking &amp; Alumni Services</li> </ul>	<ul style="list-style-type: none"> <li>• Orientation and induction</li> <li>• Student Counselling &amp; Life Skills (Stress Management, Substance Abuse, Healthy Relationships, etc.)</li> <li>• Student Health and Wellness Development Support</li> <li>• Wellness Peer Mentors Programme (Peer to Peer Support) (WPM)</li> <li>• Student Friendly Healthy Services (Testing &amp; Screening)</li> <li>• Health Talks (HIV, STI, Condom Use, Cancer Awareness, etc.)</li> </ul>
EXTRA-CURRICULAR ACTIVITIES	
<ul style="list-style-type: none"> <li>• <b>Ball Games:</b> Aerobics, Athletics (incl. X-Country &amp; Marathons), Badminton, Baseball, Basketball, Chess, Cricket, Football, Gymnastics, Netball, Rugby, Softball, Tennis, Tennisquet, Table Tennis &amp; Volleyball.</li> <li>• <b>Performing Arts:</b> Comedy, Dance (all forms), Drama, Dramatised Poetry, Monologue, Music (all forms), Poetry &amp; Storytelling.</li> <li>• <b>Visual Arts:</b> Drawing (all forms), Graphic Design, Painting (all forms), Photography, Sculpting &amp; Textiling.</li> <li>• <b>Indigenous Games:</b> Dibeke/Skununu, Diketo/ Magave/ Upuca, Juk-Skei, Kgati/ Ntimo/ Ugqaphu, Kho-Kho, Morabaraba/ Ncuvu &amp; Intonga.</li> <li>• <b>Adventure &amp; Recreation:</b> Egg Race, Hiking, Needle Race, Obstacle Course, Potato Race, Sack Race, Skating (Board &amp; Roller) &amp; Three Legged Race.</li> </ul>	
STUDENT GOVERNANCE AND LEADERSHIP TRAINING	
<ul style="list-style-type: none"> <li>• SRC Leadership Development &amp; Training</li> </ul>	

12

## 9 GOVERNANCE AND MANAGEMENT



## 10 PARTNERSHIPS

ORBIT TVET College has signed Memorandums of Understanding (MoUs) with the following Business, Industry, Government, SETAs and Community partners:

PARTNER	PURPOSE OF PARTNERSHIP
<b>Business and Industry</b> Tharisa Mining Ford SA Seda Platinum Incubator Impala Platinum Mines Laundrie Engineering and Mining Sun City Samsung ABSA Bank AECI Glencore Mining Electro Diesel	Artisan Development Training Placement and Training of Students / Workshop Support Incubator Business Support Training of lecturers / Placement of Students Placement and Training of Students Placement of Students Placement and Training of Students Placement and Training of Students Artisan Development Training / Funding for Training Artisan Development Training Artisan Development Training
<b>Universities/Universities of Technology/TVET Colleges</b> Tshwane University of Technology	Skills Development
<b>Government Departments</b> Department of Rural Development Department of Economic Development Department of Small Business Development Department of Education NW NSF Department of Health NW NASHUA	Automotive Repairs and Nail Technology SMME Development / Centre for Entrepreneurship Centre for Entrepreneurship and Rapid Incubator ECD Training Training: Learnerships and Rural Development Programmes Artisan Development Training
<b>Local Communities, NGOs and municipalities</b> Rustenburg Local Municipality Bojanala Platinum District Municipality Kgetleng Local Municipality Office of the Sherriff of the Magistrate Court Job Shimankana Hospital Brits Hospital	Use of Facilities and Student Placement/Training of employees/Artisan Development Placement of Students Placement of Students Placement of Students Placement of Students Placement of Students
<b>Sector Education and Training Authorities (SETAs)</b> Finance and Accounting SETA (FASSET) Services SETA ETDPA SETA MQA merSETA INSETA CETA HWSETA W&RSETA	Brand Ambassadorship Internship Programme Internship Programme Jewellery Design and Manufacture Artisan Development Programme Graduate Development Internship/Graduate Development Centre of Specialisation

13



## CENTRAL OFFICE

Tel: (014) 592 7014 • Tel: (014) 597 5500

e-mail: [info@orbitcollege.co.za](mailto:info@orbitcollege.co.za)

Fatima Bhayat Street RUSTENBURG, 0299

## BRITS CAMPUS

Tel: (012) 381 5700

e-mail: [info@orbitcollege.co.za](mailto:info@orbitcollege.co.za)

Reitz Street North BRITS, 0250

## MANKWE CAMPUS

Tel: (014) 555 2900

e-mail: [info@orbitcollege.co.za](mailto:info@orbitcollege.co.za)

Stand 230, Unit 2 MOGWASE, 0314

## RUSTENBURG CAMPUS

Tel: (014) 592 8461/2 • Tel: (014) 597 5502

e-mail: [info@orbitcollege.co.za](mailto:info@orbitcollege.co.za)

c/o Fatima Bhayat & Bosch Street RUSTENBURG, 0299

### Call Centre

0861 000 305 • 014 592 4147

[www.orbitcollege.co.za](http://www.orbitcollege.co.za)

Follow us on

